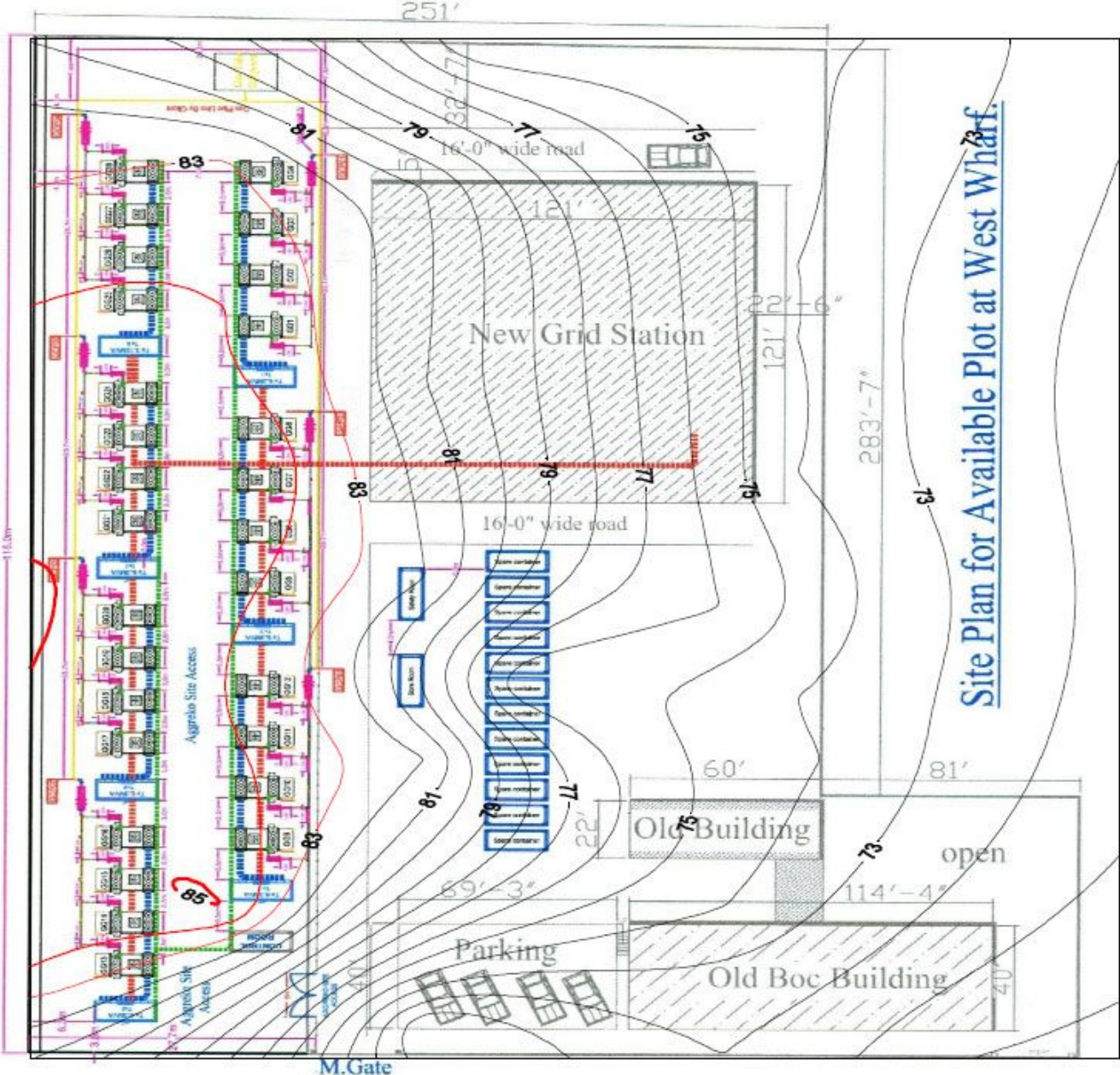
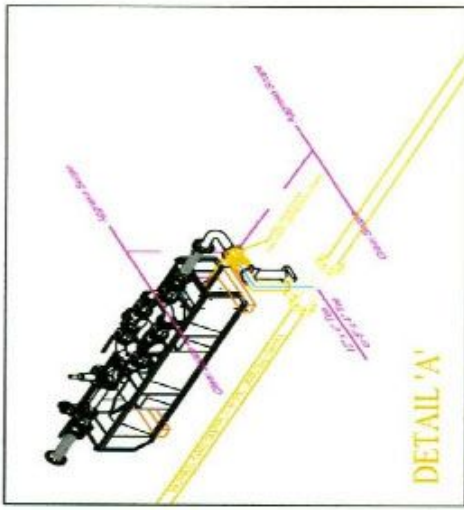


GAS CONNECTION PART

QSP	SIZE	TYPE/NOTING	COMMENTS
1	DN 100 (4")	BRASS PIPE FLANGED	CLIENT TO PROVIDE F TEE OFF CONNECTION WITH INTERLOCK VALVE
1	DN 100 (4")	BRASS PIPE FLANGED	CLIENT TO PROVIDE F TEE OFF CONNECTION WITH INTERLOCK VALVE
1	DN 100 (4")	BRASS PIPE FLANGED	CLIENT TO PROVIDE F TEE OFF CONNECTION WITH INTERLOCK VALVE
1	DN 100 (4")	BRASS PIPE FLANGED	CLIENT TO PROVIDE F TEE OFF CONNECTION WITH INTERLOCK VALVE
1	DN 100 (4")	BRASS PIPE FLANGED	CLIENT TO PROVIDE F TEE OFF CONNECTION WITH INTERLOCK VALVE
1	DN 100 (4")	BRASS PIPE FLANGED	CLIENT TO PROVIDE F TEE OFF CONNECTION WITH INTERLOCK VALVE
1	DN 100 (4")	BRASS PIPE FLANGED	CLIENT TO PROVIDE F TEE OFF CONNECTION WITH INTERLOCK VALVE



Site Plan for Available Plot at West Wharf.

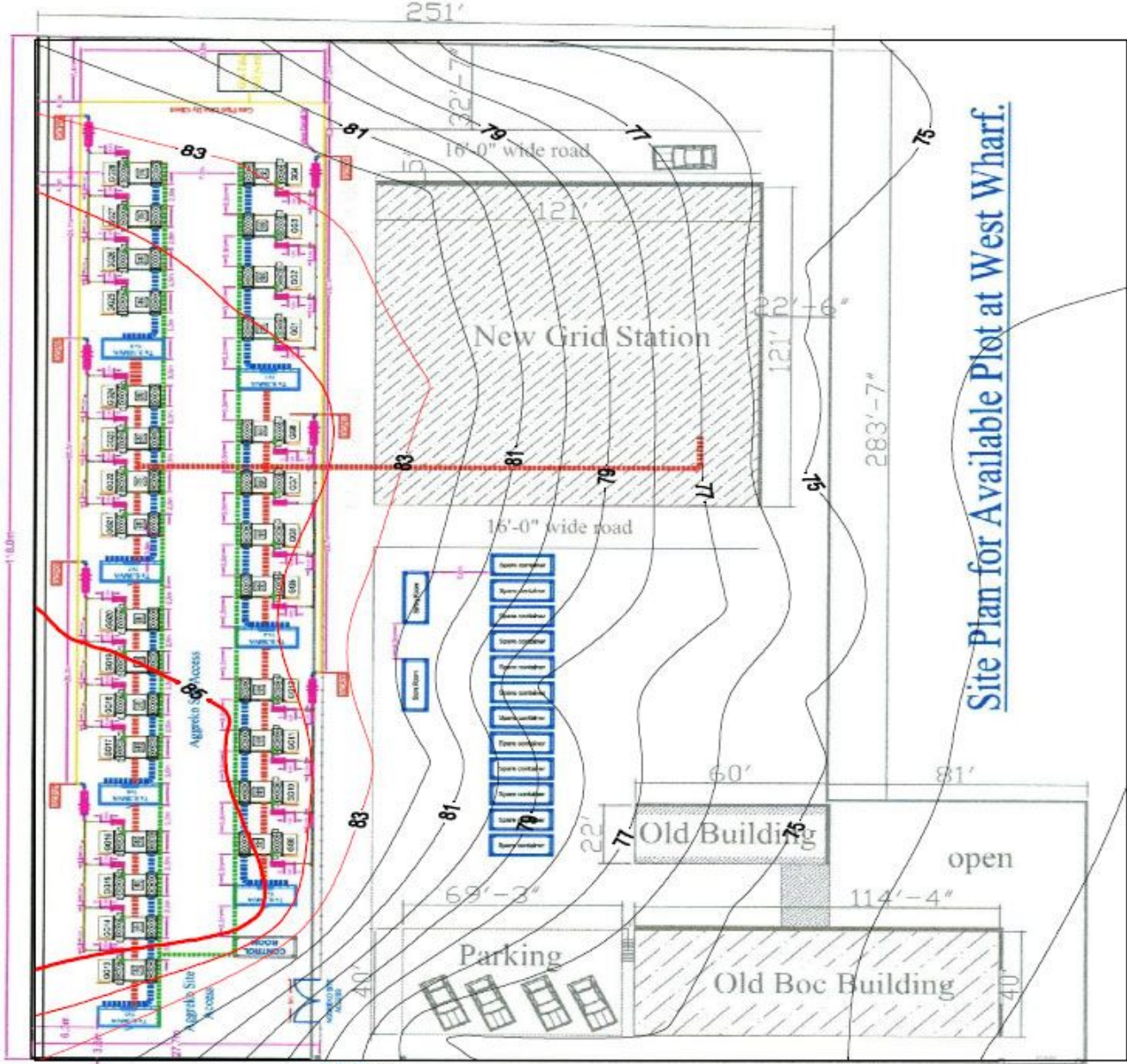
REV. NO.	DATE	DESCRIPTION
4	07 September 2008	Preliminary
3	01 September 2008	Preliminary
2	07 August 2008	Preliminary
1	17 September 2008	Preliminary
5	11 September 2008	Preliminary

PROJECT:	GAS POWER 25 MW/11kV/50HZ
SCALE:	1:500
DATE:	11/09/08
DESIGNER:	A. Fakhim
CHECKER:	J. Jupp
DATE:	11/09/08
SCALE:	NTS
PROJECT:	13004-0003-AS
DATE:	11/09/08
SCALE:	1 OF 1

Contour Interval = 01 dB

GAS CONNECTION POINT

SIZE	TYPE	REMARKS	COMMENTS
DN 125 (4")	BRASS	INTERLOCKED	CLIENT TO PROVIDE A TIE-OFF CONNECTION WITH INTERLOCK VALVE
DN 125 (4")	BRASS	INTERLOCKED	CLIENT TO PROVIDE A TIE-OFF CONNECTION WITH INTERLOCK VALVE
DN 125 (4")	BRASS	INTERLOCKED	CLIENT TO PROVIDE A TIE-OFF CONNECTION WITH INTERLOCK VALVE
DN 125 (4")	BRASS	INTERLOCKED	CLIENT TO PROVIDE A TIE-OFF CONNECTION WITH INTERLOCK VALVE
DN 125 (4")	BRASS	INTERLOCKED	CLIENT TO PROVIDE A TIE-OFF CONNECTION WITH INTERLOCK VALVE
DN 125 (4")	BRASS	INTERLOCKED	CLIENT TO PROVIDE A TIE-OFF CONNECTION WITH INTERLOCK VALVE
DN 125 (4")	BRASS	INTERLOCKED	CLIENT TO PROVIDE A TIE-OFF CONNECTION WITH INTERLOCK VALVE



Site Plan for Available Plot at West Wharf.

REV/NO.	DATE	DESCRIPTION
4	07 September 2008	Preliminary
3	01 September 2008	Preliminary
2	07 August 2008	Preliminary
6	11 September 2008	Preliminary
5	11 September 2008	Preliminary

PROJECT:	GAS POWER 25 MW/11KV/50HZ	SCALE:	NTS	DATE:	1 CF 1
CLIENT:	KESC West Warf SLO	DESIGNER:	J. J. J.	APPROVED:	A. Fahmy
<p>aggreko International Power Projects</p>			P.O. Box 17576, Jebel Ali Dubai, United Arab Emirates Tel: +971 - 4 883 4059 Fax: +971 - 4 883 4145 www.aggreko.com		
<p>aggreko International Power Projects</p>			KESC West Warf SLO		

Contour Interval = 01 dB